

# Avantor® LC-MS Consumables: Simplify Every Step of Your LC-MS Workflow

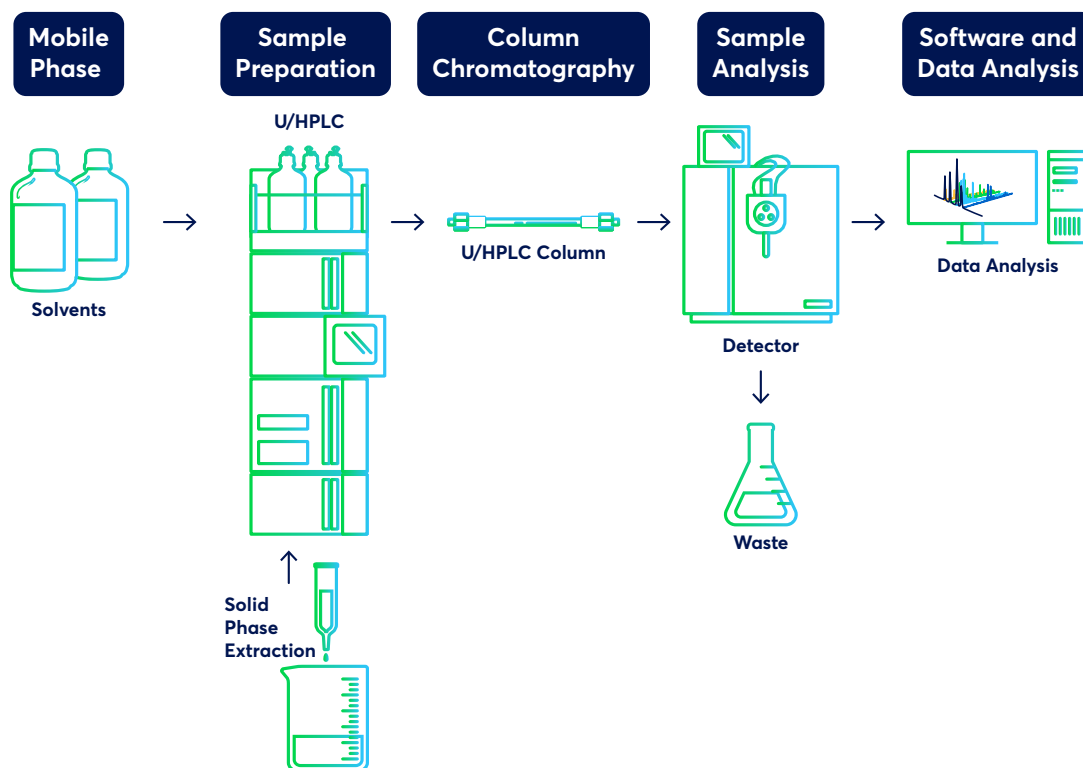
Empowering you with  
consistent quality, scientific  
precision and expert support.



Your results matter, and the quality of your consumables can make a difference. Avantor® offers a complete range of LC-MS products designed to deliver accuracy, consistency and confidence across every stage of your analysis, from sample prep to final readout.

Whether you're working in pharmaceutical research, clinical diagnostics, food safety or environmental testing, our LC-MS solutions are made to support your success. From high-purity solvents and optimized columns to durable vials and advanced sample preparation tools, we help reduce variability and streamline your process.

What sets Avantor apart is our unbiased expert technical support, customization services to help meet your unique applications and reliable, global distribution network that helps make sure you get the products you need when you need them. Avantor is your trusted partner for LC-MS success.



## Superior Separations Start with ACE® Columns

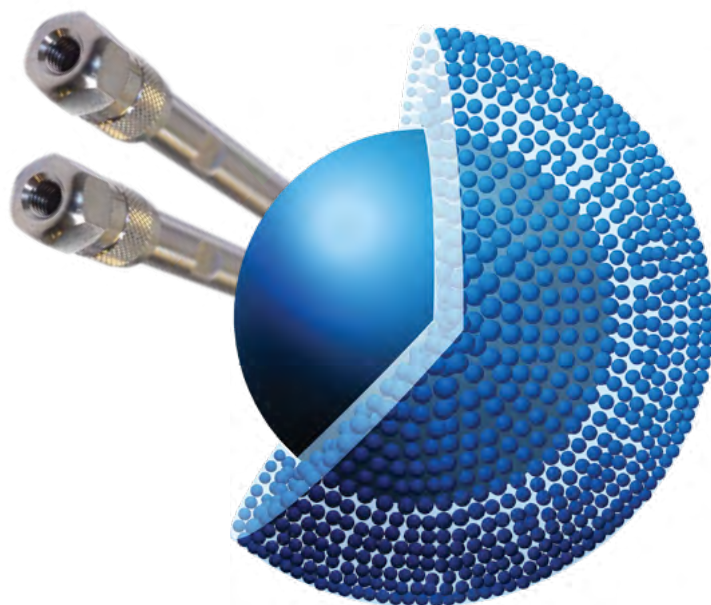
ACE® columns are precision engineered to meet the demanding needs of today's analytical labs. Our columns are made to deliver consistent, high-performance separations across a wide range of applications. That's why they're a trusted choice for scientists like you, who can't afford downtime or inconsistent results.

ACE columns deliver:

- **High efficiency and selectivity:** Get well-defined peak resolution and precise quantitation, thanks to our advanced particle engineering and refined solid phase chemistries.
- **Wide range of uses:** Ideal for analyses in pharmaceuticals, environmental studies, food testing and clinical applications.
- **Reliable performance:** Manufactured under strict quality standards to give you consistent results.

The ACE column portfolio also offers you:

- **A wide range of columns:** We offer columns for reversed-phase, HILIC, ion-exchange and specialty applications.
- **Expert unbiased technical support:** Get troubleshooting guidance and access to our comprehensive method library.
- **Customization options:** Meet your unique workflow needs with columns made for your unique dimensions and chemistries.



## Optimize LC-MS Performance with High-Purity Solvents and Additives

Even trace impurities can distort your data in LC-MS workflows. That's why Avantor offers a wide selection of high-purity solvents and additives. Each has been formulated to help you maintain low background noise, stable baselines and sharp peak shapes, no matter what method you use.

Whether you're running routine assays or pushing the limits of detection, our portfolio supports you with consistent, contamination-free performance. Our solvents and additives are formulated to minimize background noise and maximize LC-MS sensitivity:

- **Ultra-high purity:** Reduce background interference and protect detector performance with solvents that offer low-level impurities and UV absorbance with minimal particulate contamination.
- **Consistent composition:** Helps you ensure reproducible retention times and peak shapes.
- **Wide selection:** Choose from a comprehensive selection of solvents, acids, buffers and ion-pairing reagents for diverse LC-MS methods.

Solvents and additives from Avantor also provide you with:

- **Reliable supply chain:** Our integrated production and distribution network helps ensure you have uninterrupted availability of the products you need.
- **Expert unbiased technical support:** Get guidance from our specialists on solvent selection and method optimization.
- **Streamlined ordering:** Use our simplified procurement process for your routine and bulk purchase requirements.

### LC-MS SOLVENT SPECIFICATION TABLE

Method	J.T.Baker® BAKER ANALYZED™ HPLC reagents	J.T.Baker BAKER ANALYZED LC/MS reagents	J.T.Baker BAKER ANALYZED ULTRA LC/MS™ reagents	VWR HiPerSolv CHROMANORM® LC-MS grade	VWR HiPerSolv CHROMANORM ULTRA LC-MS grade
LC-MS	X	X	X	X	X
UHPLC-MS			X		X

## LC-MS SOLVENT SPECIFICATION TABLE

Description	Quantity (L)	Assay min. %	Residue max. %	Water max. %	Min. % UV transmittance/wavelength (nm) (1 cm quartz cell, distilled water)							Cat. No
Acetone	1	99.8	0.0005	0.20	50/345	80/350	98/360				20067.290	
	2.5	99.8	0.0005	0.20	50/345	80/350	98/360				20067.320	
Acetonitrile, super gradient grade*	1	99.95	0.0002	0.003	80/195	95/200	96/210	97/220	98/230	99/240	99/250	83639.290
	2.5	99.95	0.0002	0.003	80/195	95/200	96/210	97/220	98/230	99/240	99/250	83639.320
	4	99.95	0.0002	0.003	80/195	95/200	96/210	97/220	98/230	99/240	99/250	83639.400
	5 (ALU)	99.95	0.0002	0.003	80/195	95/200	96/210	97/220	98/230	99/240	99/250	83639.360
Acetonitrile, gradient grade*	1	99.95	0.0005	0.02	80/195	90/200	94/210	96/220			99/240	20060.290
	2.5	99.9	0.0005	0.02	80/195	90/200	94/210	96/220			99/240	20060.320
	2.5 (PCG)	99.9	0.0005	0.02	80/195	90/200	94/210	96/220			99/240	20060.420
	5 (ALU)	99.9	0.0005	0.02	80/195	90/200	94/210	96/220			99/240	20060.360
Acetonitrile, isocratic grade	1	99.9	0.0005	0.03	80/200	85/210	90/220	98/230	99/250			20048.290
	2.5	99.9	0.0005	0.03	80/200	85/210	90/220	98/230	99/250			20048.320
	5 (ALU)	99.9	0.0005	0.03	80/200	85/210	90/220	98/230	99/250			22248.360
Butan-1-ol	1	99.8	0.0010	0.10	50/230	80/240	98/310				83633.290	
1-Chlorobutane	2.5	99.7	0.01	0.01	50/227	80/232	98/250				83631.320	
Chloroform (stab. EtOH***)	1	99.8	0.0010	0.05	50/250	84/260	95/280	98/300			83627.290	
	2.5	99.8	0.0010	0.05	50/250	84/260	95/280	98/300			83627.320	
Chloroform (stab. MB**)	2.5	99.8	0.0010	0.05	50/250	84/260	95/280	98/300			83626.320	
Cyclohexane	1	99.5	0.0005	0.01	75/230	80/240	98/250				83629.290	
	2.5	99.5	0.0005	0.01	75/230	80/240	98/250				83629.320	
Dimethyl sulfoxide	1	99.5	0.0010	0.05	60/280	75/300	90/320	95/330	98/360		85922.290	
	2.5	99.5	0.0010	0.05	60/280	75/300	90/320	95/330	98/360		85922.320	
1,2 Dichloroethane	1	99.8	0.0005	0.01	50/240	80/250	90/270				85923.290	
	2.5	99.8	0.0005	0.01	50/240	85/250	95/270				85923.320	
Dichloromethane (stab. EtOH***)	1	99.8	0.0010	0.05	50/240	80/245	98/260				83623.290	
	2.5	99.8	0.0010	0.05	50/240	80/245	98/260				83623.320	

Acetonitrile and methanol super gradient grade are also available in new large aluminum 10 and 28 L packs and 200 L stainless-steel drums.

\*\*\*\* Fluorescence test:  
 • (as quinine) (254 nm) max. 1 ppb  
 • (as quinine) (365 nm) max. 1 ppb  
 \*\*\*\* Color: max. 10 APHA

ALU: aluminum can  
 HDPE: high-density polyethylene bottle  
 PCG: plastic-coated glass bottle  
 All other products are supplied in glass bottles.

\* Gradient at 210 nm, max. 3 mAU  
 \*\* Stabilized with 2-methyl-2-butene  
 \*\*\* Stabilized with ethanol  
 \*\*\*\* Specific conductivity 25 °C max. 1 µs/cm

In addition to the HPLC solvents listed above, Avantor has a wide range of mobile phase modifiers and ion-pair reagents.

Need help selecting the right solvent for your system? Our technical team is ready to assist you with unbiased advice that focuses on your success. **Contact us.**

## Optimize your results with vials and high-performance sample preparation from Avantor

Protect your sample integrity and enhance workflow efficiency when you choose from the wide range of vials and sample prep products from Avantor.

- **Minimize analyte loss:** Low-adsorption vial surfaces and high-quality septa reduce compound binding so what you inject is what you quantify.
- **Autosampler-ready:** Our vials and closures are engineered for compatibility with major LC-MS autosamplers and automation platforms to help you streamline your throughput.
- **Durable and reliable:** Each component is tested to withstand chemical and thermal stress, reducing the risk of breakage, leaks or sample degradation.

### ADVANCED SAMPLE PREP PRODUCTS

Our selection of sample prep products includes:

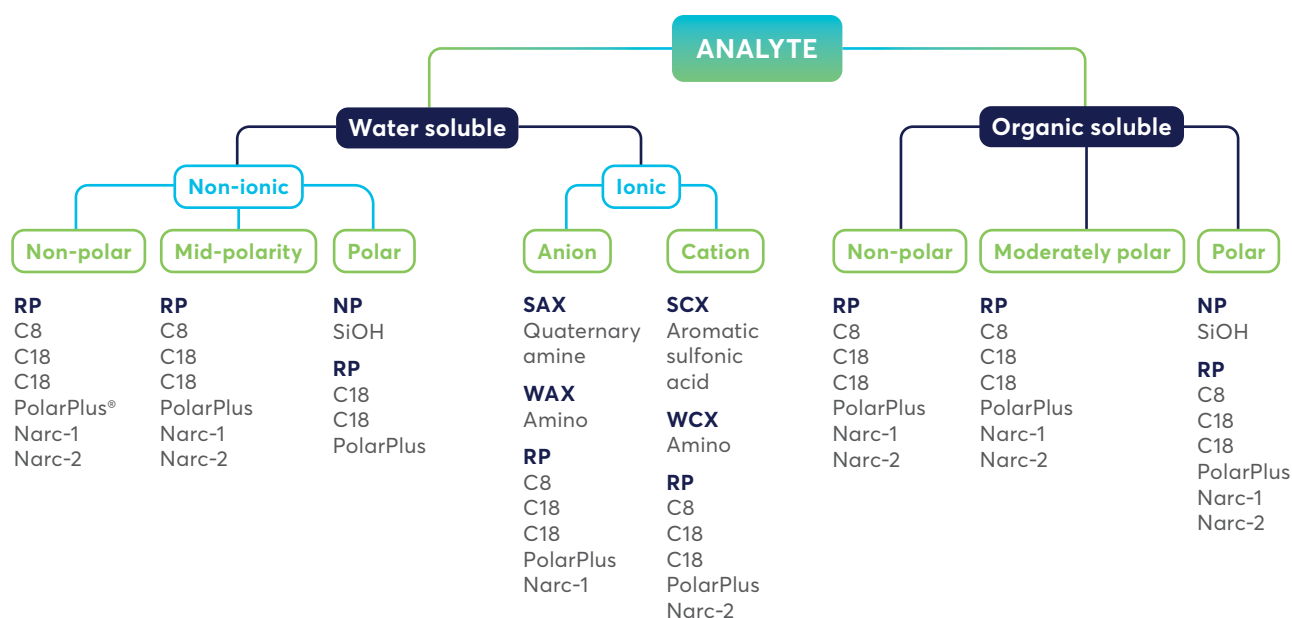
- **Filtration devices** that remove particulates for cleaner injections
- **Solid phase extraction (SPE) formats** that concentrate and purify analytes to improve sensitivity with disk or column formats
- **Protein precipitation kits** that simplify sample cleanup preparation of biological matrices

### GET END-TO-END SAMPLE PREPARATION SUPPORT

Our vials and sample preparation products and services include:

- **Customization and on-site services:** We offer tailored solutions, from single-use kits to on-site consultation for specialized workflows.
- **Inventory management made easy:** Simplify your sourcing and stock management with Avantor's integrated supply chain, procurement and inventory management solutions.
- **Get everything you need in one place:** Avantor supports every step of your LC-MS workflow. Get all the products you need — vials, caps, septa, filtration and SPE products — from one dependable source.

Vial	Cat. No.
Clear glass	548-1990
Amber glass	548-1991





## Why Choose Avantor?

Avantor isn't just a supplier. We are a partner in your scientific process. Our LC-MS solutions combine:

- A comprehensive, high-quality consumables portfolio
- Unbiased technical and quality support
- Customization options and services that fit your workflow
- Global reach with secure, reliable distribution
- Smart procurement tools to reduce complexity

### Ready to simplify and strengthen your LC-MS workflow?

Contact our chromatography tech support team at [chromsupport@avantorsciences.com](mailto:chromsupport@avantorsciences.com) or visit [avantorsciences.com](http://avantorsciences.com).